

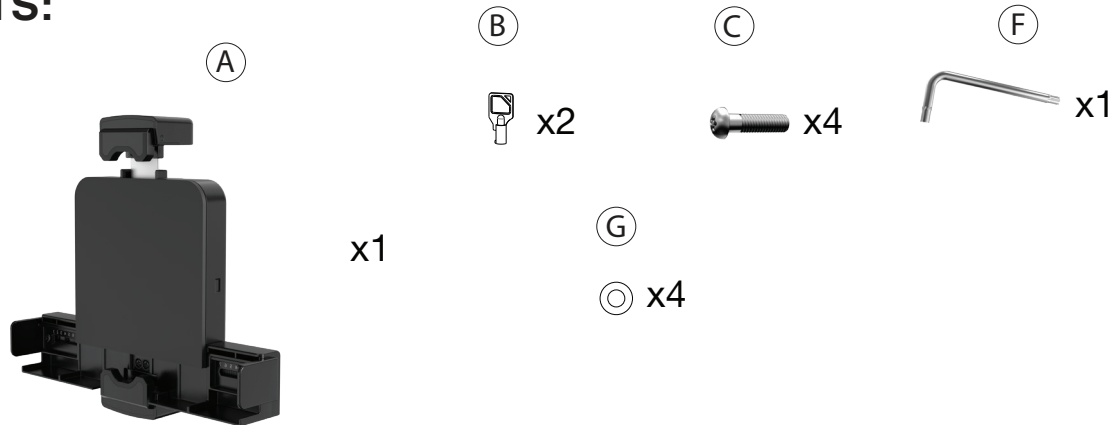


CTA Digital Premium Security Clamp Holder for Medium Sized Tablets

ADD-PREMSC

INSTRUCTION - MANUAL

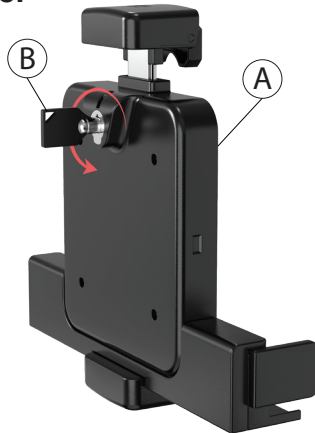
CONTENTS:



INSTALLATION:

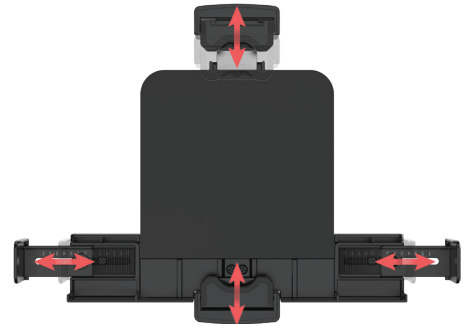
1. Unlocking Tablet Holder

1A. Insert the key (B) in the back of the holder (A) to allow the holder to be unlocked and have flexibility.



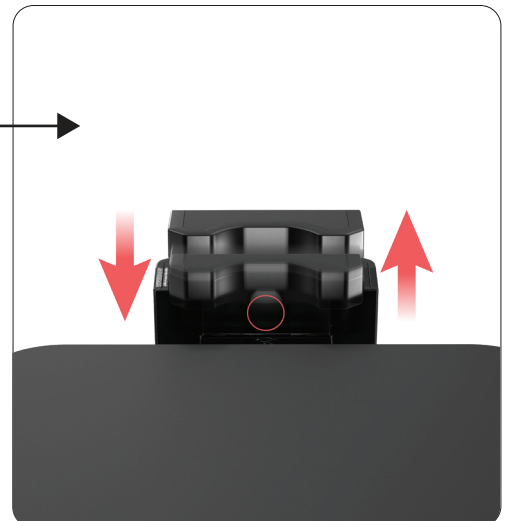
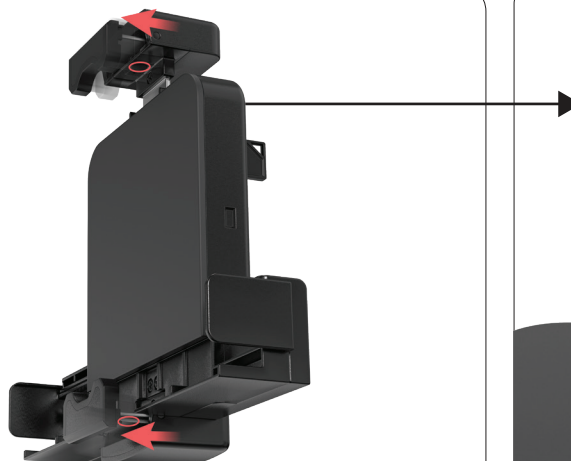
2. Extending Vertical & Horizontal Arms

2A. Once holder has been unlocked, the vertical holder arm can not easily adjust up and down. Extend the arm to the max range. The bottom arm will be move up and down at the same time.



3. Press Release Button

3A. There will be a round release button on the inside of the top and bottom holder grip areas. Once you press it down, the forward facing grip will extend to the max range.



4. Inserting Tablet and Case

****DEVICE AND CASE ARE SHOWN FOR ILLUSTRATION AND NOT INCLUDED**

4A. Extend all the holder arms to the max range as shown to the right (Shown in FIG 1)

4B. Insert tablet and make sure all holder arms are retracted to the edges of the tablet (Shown in FIG 2)



FIG 1



FIG 2

5. Securing Holder to Tablet and Case

5A. Once the case has been inserted. Retract all the holder arms and grips that was extended earlier. This includes the vertical arm and then the two forward grips, gently push them back until they are flush with the edge of the case securely. (shown in FIG 3)

****DEVICE AND CASE ARE SHOWN FOR ILLUSTRATION AND NOT INCLUDED**

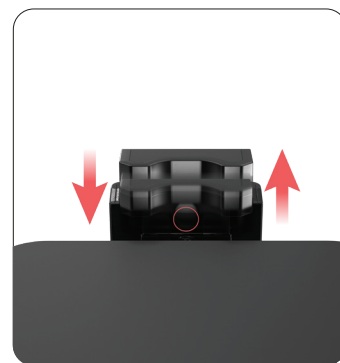
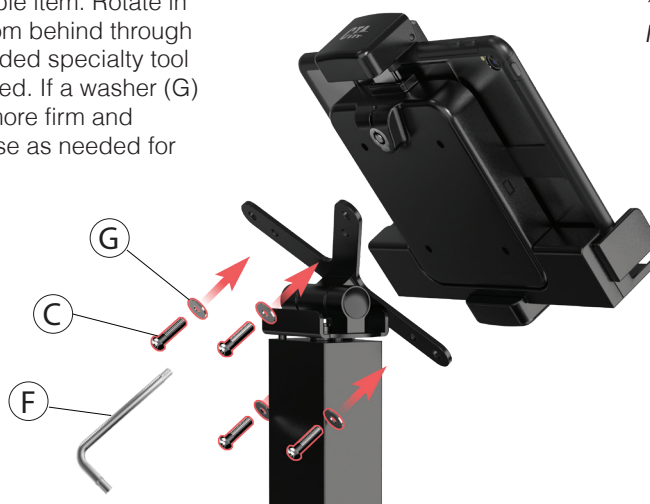


FIG 3

6. Attaching to VESA Compatible Product (Not Included)

6A. Align back VESA holes of holder to VESA holes of compatible item. Rotate in specialty screws (C) from behind through VESA holes using provided specialty tool (F) until securely fastened. If a washer (G) is needed to create a more firm and secure setup. Please use as needed for all 4 screws.

****DEVICE, CASE, KIOSK ARE SHOWN FOR ILLUSTRATION AND NOT INCLUDED**



7. Adjusting the Side Holder Arms

7A. Using a screwdriver (not included) - loosen the screw (E) at the two side arms. This will allow you to flex the range to fit the vertical edges of the device and case. Place the tablet and case inside to find the right range, adjust the arms to be right up against the vertical edge of the case. Then remove the case and then tighten the screw (E) using a screwdriver (not included) until securely fastened.

