

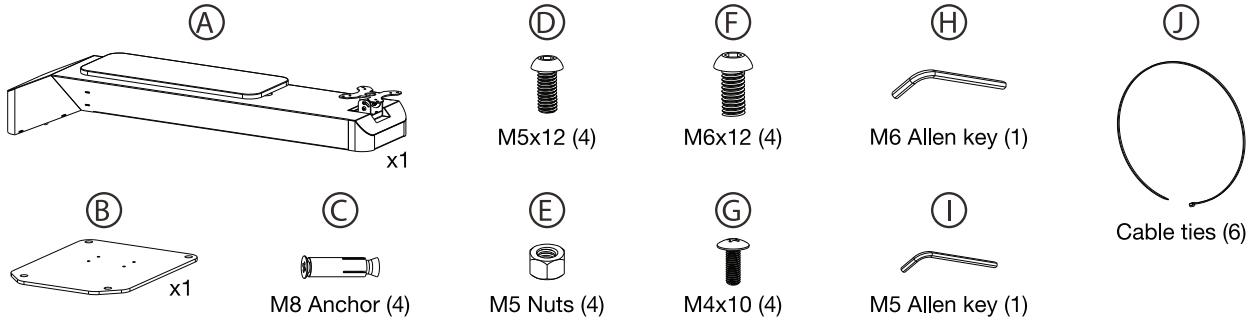


VESA Floorstand Kiosk with LED Lights

ADD-VFSKLED

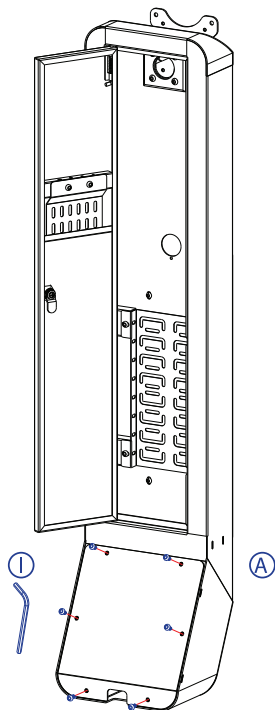
INSTRUCTION - MANUAL

CONTENTS:

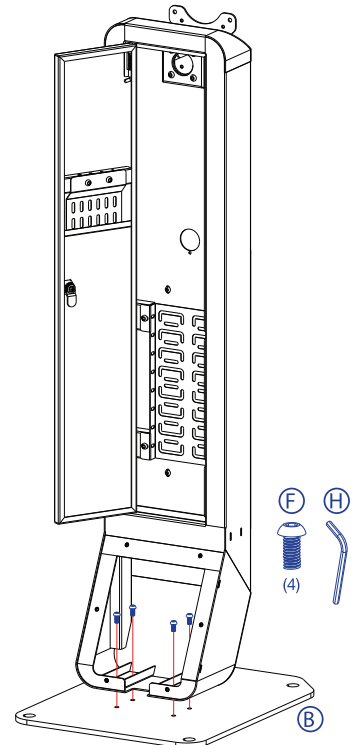


INSTALLATION:

1. Attaching Floorstand Body to Base Plate

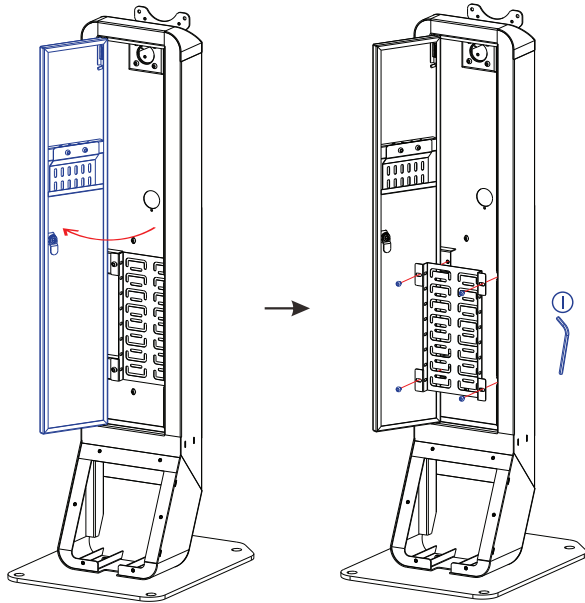


1A. Remove the cover to the bottom access panel of the floorstand base area (A) by using the provided tool (I) at the four integral screw locations and removing screws and cover.

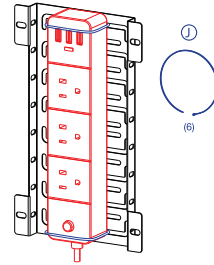


1B. Align the floorstand body (A) mounting holes to the base plate (B) mounting holes as shown above. Rotate in four screws (F) from above using provided tool (H) until securely tightened.

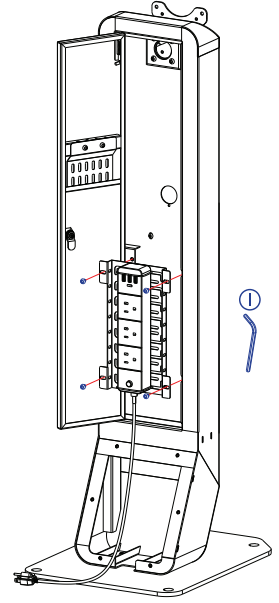
2. Setting up the Storage Rack



2A. Open the main access panel door and find the storage rack. Using provided tool (I), unscrew the four integral screws and remove the rack as shown above.

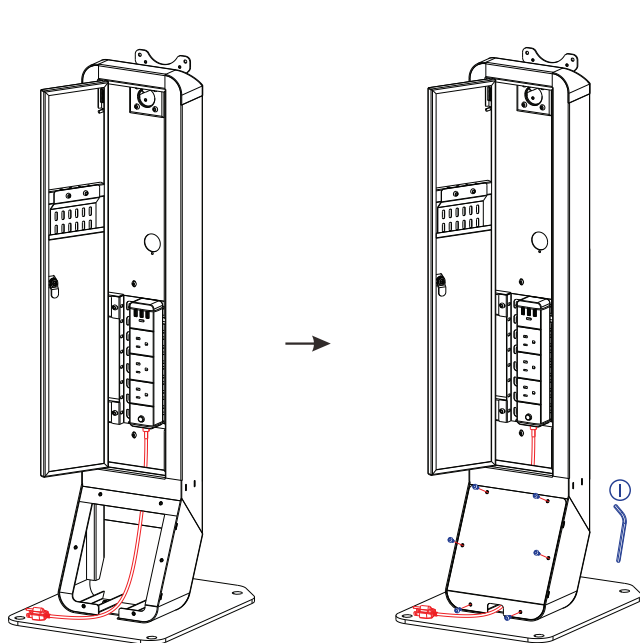


2B. Take your power surge (not included) and align it vertically on the rack as shown. Using provided zip ties (J), tie down the power surge at the top and bottom until secure.

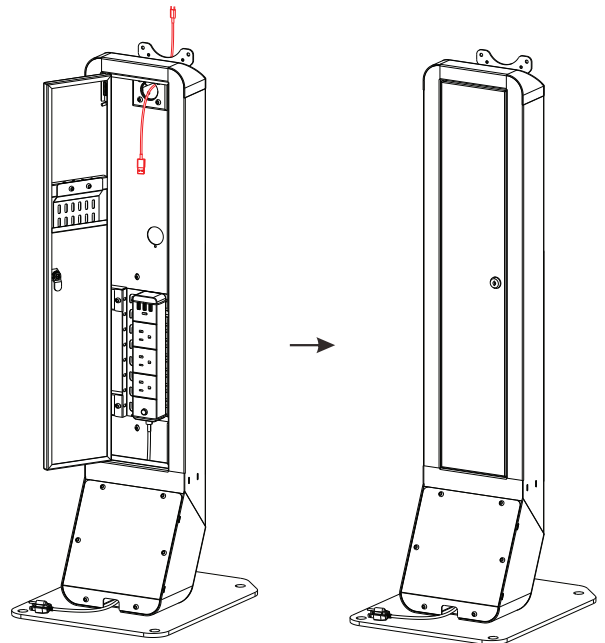


2C. Take the now attached power surge and rack and screw everything back in place using provided tool (I) until secure.

3. Setting Up Cable Routing



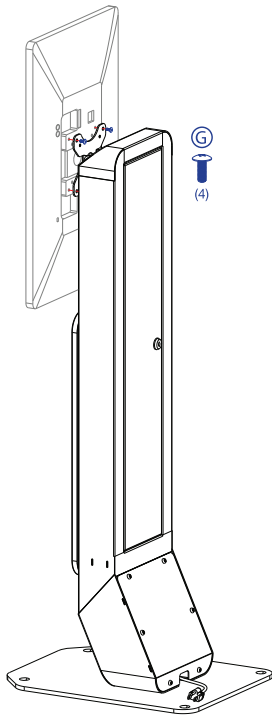
3A. Take the power surge cord (not included) and route it through the base access panel area. Have it come out where there is a notch at the bottom. Take the base access panel cover and place it back on top as shown above. Rotate in the original four integral screws using provided tool (I) until securely tightened.



3B. Open your main back door access panel. Take your display device's power cord (not included) and pre-route it through the opening at the top as shown. Later when you attach the device, easily connect one end into the display.

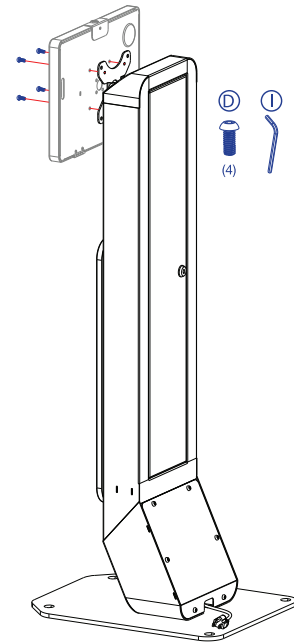
4. Attaching Display or Enclosure to Floorstand

ATTACHING DISPLAY SCREEN TO VESA (DISPLAY NOT INCLUDED)



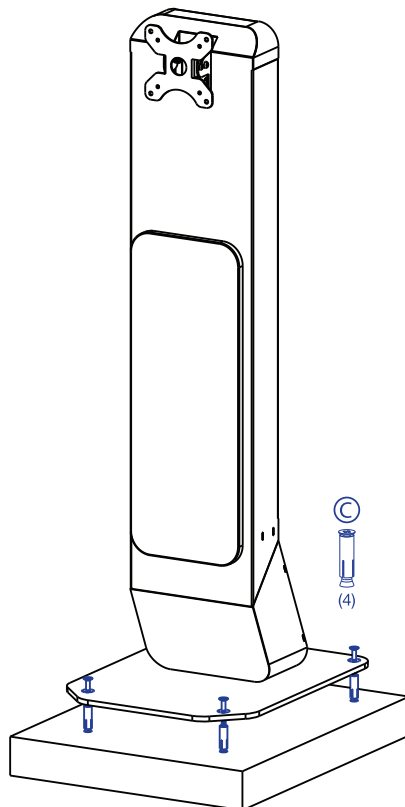
4A. Align VESA holes of display (not included) to the VESA holes of VESA plate of floor stand. Rotate in four screws (G) from behind as shown above using screwdriver tool (not included). Rotate until securely tightened.

ATTACHING ENCLOSURE SCREEN TO VESA (DISPLAY NOT INCLUDED)



4B. Align VESA holes of enclosure (not included) to the VESA holes of VESA plate of floor stand. Rotate in four screws (D) from the front of the enclosure as shown above using provided tool (I). Rotate until securely tightened. Place device in AFTER you have mounted the enclosure to the floorstand.

5. Mounting to Surface



5A. First, find the surface location where you wish to mount the floorstand to. Mark off the locations of the four mounting holes of the base plate.

Next, pre-drill holes using a power drill (not included) and drill bit (Not included) that match the diameter and length of the screws (C). Insert anchors at all four locations.

Align the four mounting holes of the floorstand base to the pre-drilled mounting locations. Insert four screws (C) using screwdriver tool (not included) until securely tightened.