

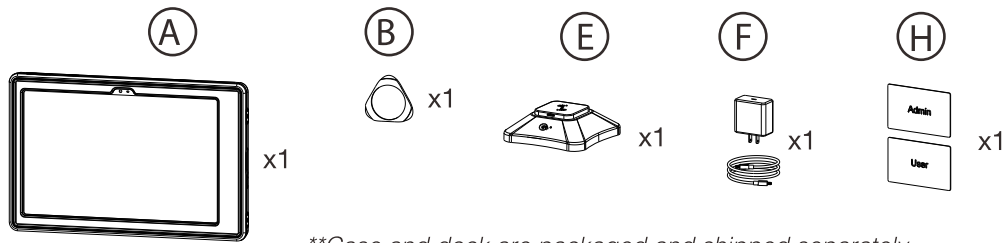


# VersaGuard Smart Lock Base Tablet Case and Dock with POGO Charging for iPad Mini 7

VG-SLCIM7 and VG-SLC Dock

## INSTRUCTION - MANUAL

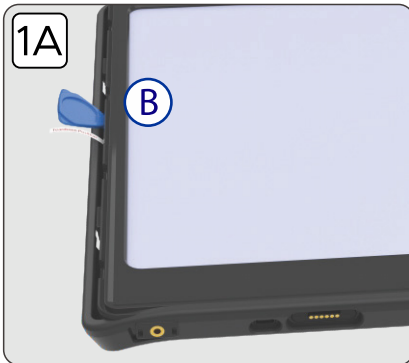
### COMPONENTS:



*\*\*Case and dock are packaged and shipped separately*

### INSTRUCTIONS:

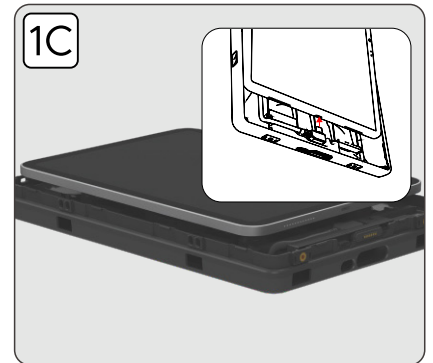
#### 1. Inserting Device into Case



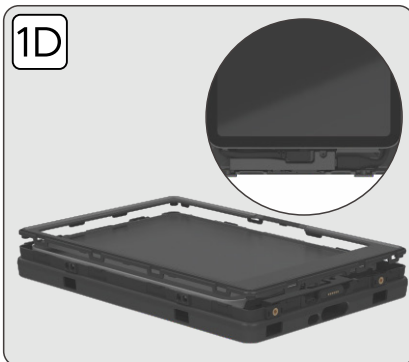
1A. Remove the outer silicone sleeve from the internal hardshell case using the provided pick tool (B)



1B. Use the provided pick tool (B) to undo the clips around the perimeter of the hardshell case. If security screws are installed on the rear corners of the case, remove these first with the provided M3 security key (D) before undoing the case clips. Once all of the clips are undone the top part of the hardshell case can be removed.



1C. Before inserting your tablet into the case, connect the internal USB-C cable in the case to the charging port on your tablet. After the cable is connected, insert the tablet into the back part of the hardshell case, making sure that the cable connecting your tablet to the case is neatly routed below the tablet.



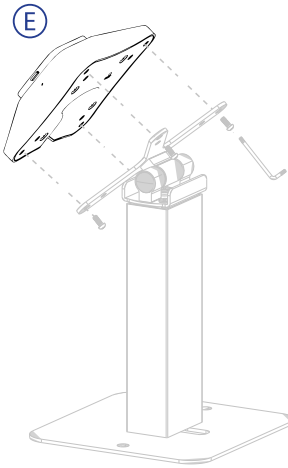
1D. Once the tablet is installed, the top of the hardshell case can be reattached to the bottom of the case. Make sure to check that all case clips around the perimeter are properly secured.



1E. Reinstall the external silicone sleeve onto the hardshell case.

## 2. Install Dock onto VESA Compatible Mount

2A. Align the mountings holes of the dock to the VESA compatible mount. Attach the dock to the mount from behind using M4x8 screws (not included).

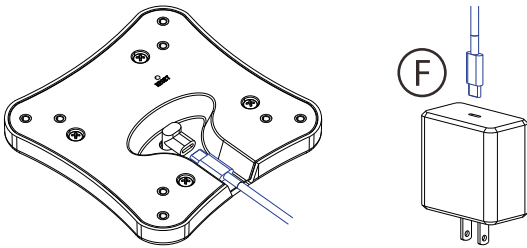


*\*\*Stand and shown hardware  
not included*

**\*\*Case and dock are packaged and shipped separately**

### 3. Connect the Dock to Power

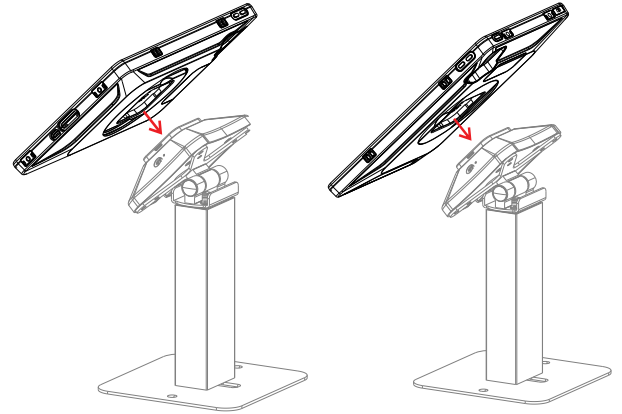
3A. Connect the power supply (F) to the USB-C port on the dock and then plug the power supply into a power outlet.



#### 4. How to Secure the Case to the Dock

4A. Align the back of the case with the center of the dock. Internal magnets will guide the case onto the dock and initiate charging.

4B. Once docked, the locking pins on the dock will engage and lock the case to the dock



*\*\*Stand not included*

*\*\*Case and dock are packaged and shipped separately*

## 5. How to Unlock the Case from the Dock

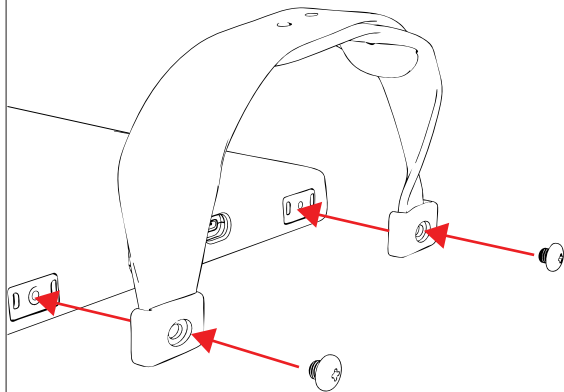
5a. Use the provided Admin or User card (H) to unlock the dock pins by tapping the card against the RFID sensor on the side of the dock

5b. Once the dock pins are disengaged, remove the case from the dock by lifting the case away.



## 6. Attaching Add-Ons via Anchor Points on Case (Not Included)

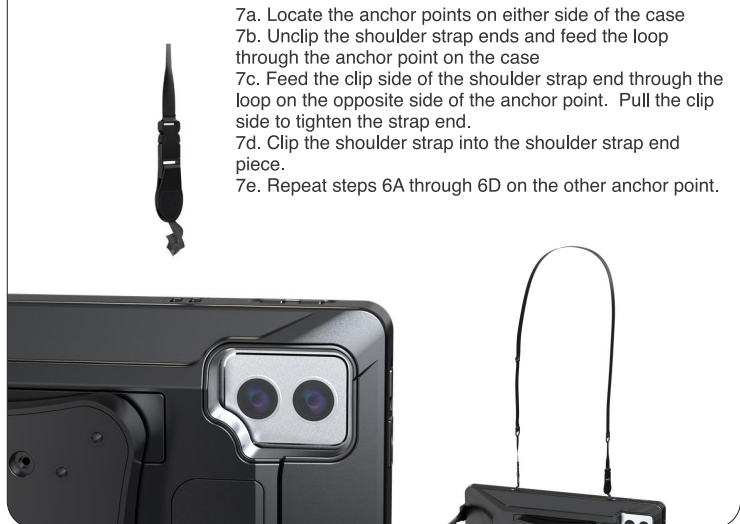
**\*\*ADD-On strap not included**



6a. Align the mounting points of the strap to the case mounting holes as illustrated above and attach using the provided mounting screws

## 7. Attaching Shoulder Strap to Case Anchor Points (Shoulder Strap Not Included)

**\*\*Shoulder strap not included**



- 7a. Locate the anchor points on either side of the case
- 7b. Unclick the shoulder strap ends and feed the loop through the anchor point on the case
- 7c. Feed the clip side of the shoulder strap end through the loop on the opposite side of the anchor point. Pull the clip side to tighten the strap end.
- 7d. Clip the shoulder strap into the shoulder strap end piece.
- 7e. Repeat steps 6A through 6D on the other anchor point.

## 8. Dock Setup

### Register the Admin Card

–Tap the Admin Card once on the "Tap card icon",

**One long beep:** Admin card is set successfully.

**Two short beeps:** Error

Admin Card have the function of lock/unlock, mode setting and user cards configuration.

**Remark:** If the registered Admin Card lost, please **Reset** the lock first to set a new Admin Card.

### Register the User Card

–Tap the Admin Card. One short beep. Remove the Admin Card.

–Sequentially Tap User Card 1, User Card 2 and so on.

**One short beep:** Correct

**Two short beep:** Error (You may be adding a registered user card)

–Tap the Admin Card again.

**One long beep:** User cards are set successfully.

**Two short beeps:** Error

**Remark:** Please keep a record of the user card sequence, as it will be needed when deleting user cards.

### Set Locking Mode

**Auto-Locking:** In auto-lock mode, if a tablet is detected, the system will automatically lock. Swipe the user card to unlock.

**Manual-Locking:** It won't automatically lock when placing the tablet case. Need to swipe the user card to lock and unlock.

Factory's default locking mode is **Auto-locking mode**.

### How to Switch Locking Mode

Please wait at least 10 seconds before proceeding to ensure all other operations have been exited.

–Long tap(hold 5-6 seconds) the Admin Card.

Upon a correct prompt(1 short beep) or one lock/unlock(when manual mode), continue holding until the success prompt(1 short beep) appears(when 5-6 seconds), then remove the card. The mode is now switched.

You will hear the prompt tone below if successfully set.

**Five short beeps:** Auto-locking mode

**Two long beeps:** Manual-locking mode

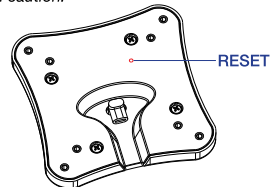
### How to Reset

The "RESET" button hole is located on the back of the lock body.

Insert a Pin into the Reset Hole.

Press and hold the Reset button for 3-5 seconds until the reset prompt(One long beep) appears.

The system will restore to default settings, and all cards will be deleted. Please proceed with caution!



### How to Delete User Card

Please wait at least 10 seconds before proceeding to ensure all other operations have been exited.

–Long tap(hold 10-12 seconds) the Admin Card.

Upon a correct prompt(1 short beep), then another short beep(when 5-6 seconds), don't remove the card until you hear the third short beep(when 10-12 seconds). Remove the card.

**Note:** There is a long interval between these three prompts. Please be patient when holding the card.

–Tap the Admin Card 1 to N times based on the sequence number of the user card to be deleted (N ranges from 1 to 10, depending on the number of user cards).

–Long tap(Hold 5-6 seconds) the Admin Card one more time. Upon a correct prompt(1 short beep), continue holding until the deletion success prompt(1 long beep) (when 5-6 seconds), then remove the card. The single user card deletion is now complete.

### Remark:

Although the Admin Card can also lock/unlock, we strongly recommend using only User Card for locking/unlocking operations.

This is because the administrator card has additional configuration functions, and using it for locking/unlocking may accidentally trigger other settings.

