

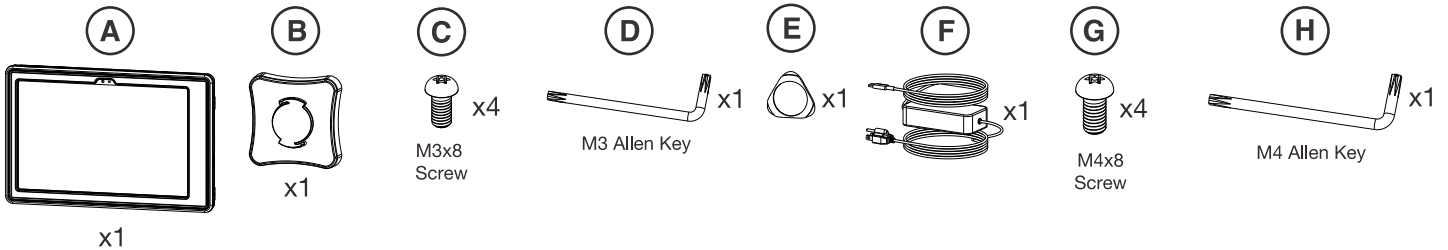


VersaGuard Twist Lock Protective Tablet Case and Dock with Wireless Inductive Charging

VG-TLICI11 & VG-TLICK11

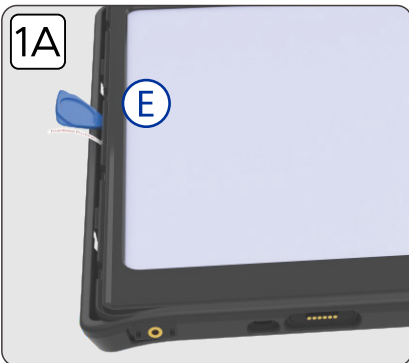
INSTRUCTION - MANUAL

COMPONENT CHECKLIST



INSTRUCTIONS:

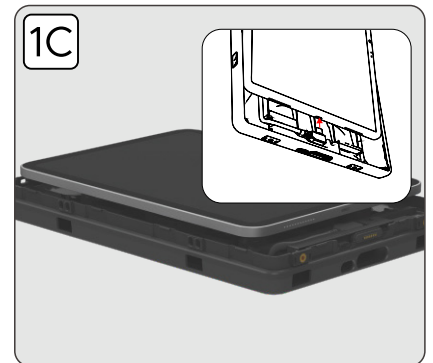
1. Inserting Device into Case



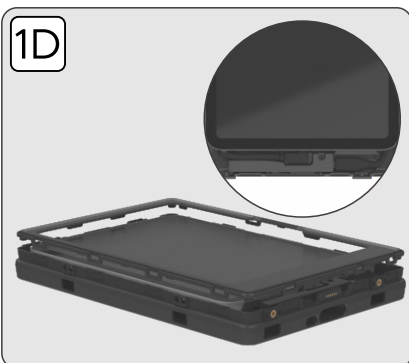
1A. Peel the outer silicone sleeve from the internal hard case using component (E). Do not take off completely. Peel back enough so you can see the edges of the hard interior case(A).



1B. To open case, first make sure the four specialty screws (C) are removed from the back of the hard case using provided tool (D). Then use your fingers or pick (E), to unclip around all edges. The internal hard case will open when all 4 sides are unclipped. Remove the top cover.



1C. Insert your tablet into the hard case. Begin by plugging in the right angle USB cable before inserting it into the case. After the cable is attached, insert your tablet into the case until everything is aligned and fitted in securely.



1D. Once the tablet device is inside, plug the internal charging cable into the power port of the device. Then re-clip back on the front hard cover on top of the hard case. Make sure to go around the perimeter and clip it all in.

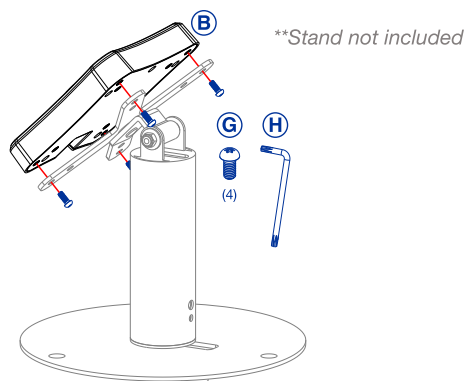


1E. Tighten 4 security screws (C) with the included specialty allen key tool (D). Rotate until securely tightened for all four locations.



1F. Reinstall the external silicone rubber sleeve jacket. Start with one corner and work your way around. Using your hands, stretch the silicone jacket back over the edges to fit properly.

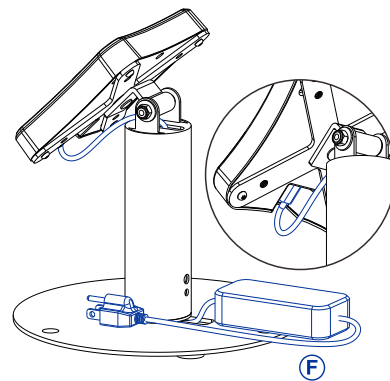
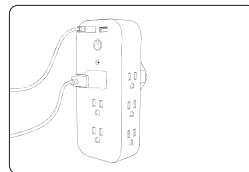
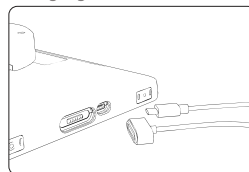
2. Attaching Dock to VESA Compatible Mount



2A. Align VESA holes of dock to the VESA compatible mount. Rotate in four screws (G) from behind using provided tool (H). Rotate through both VESA holes and rotate until securely rightened.

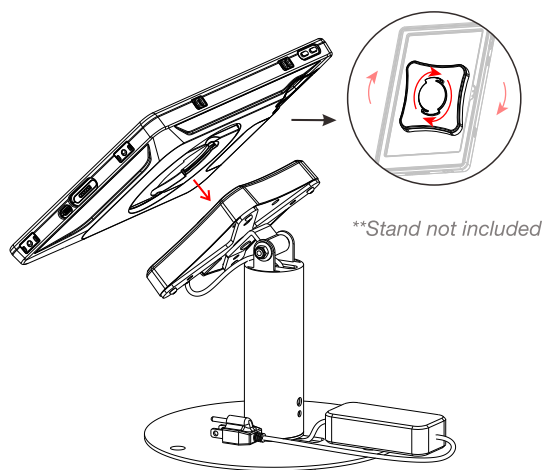
3. Setting Up Power and Cable Routing

Charging Tablet w/out Dock

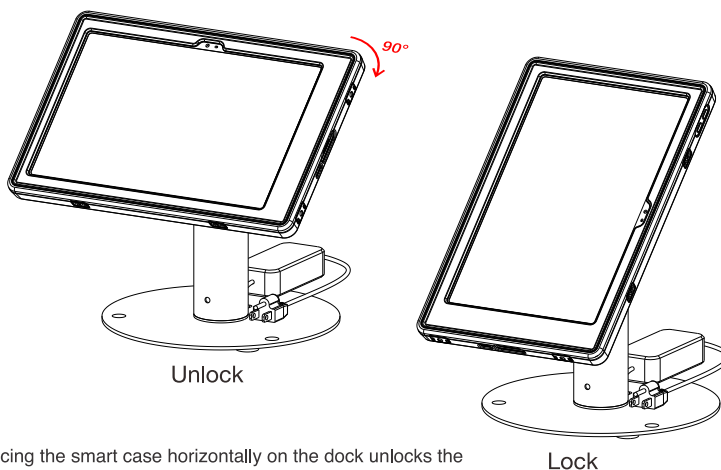


3A. Connect the power supply (F) to an outlet on one end and to the dock as shown above. You want to route the cable through the kiosk/mount body. The tablet case can also be powered directly via USB-C or POGO PIN if needed to charge without the induction dock.

4. How to Secure the Case onto the Dock



4A. Position the case horizontally on the charging dock, then twist it 90° to the right to lock it securely in place.

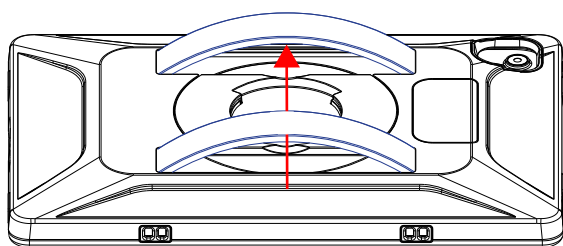


4B. Placing the smart case horizontally on the dock unlocks the charging station as shown above.

4C.. Placing the smart case vertically on the dock keeps the charging station locked as shown above.

5. Setting Up Two Elastic Handstraps on Case

5A. Remove the covers off of the elastic handstraps using your fingers. Slide your hand under both sets of handstraps for a secure mobile setup.



6. Attaching Shoulder Strap via Embedded Hook Anchor Points on Case (Not Included)

***Shoulder strap not included*

6A. Locate embedded hooks on edges of case. Determine if you want to attach the shoulder strap on a long side or short side of the case. Attach shoulder strap (not included) by threading it through the hooks and create a knot. Repeat for other end as well.

