

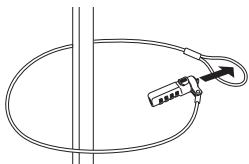


INSTALLATION INSTRUCTIONS

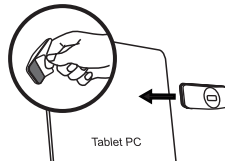
RESET COMBINATION

1. The preset combination is 0-0-0-0.
2. In order to set your own combination, use a screwdriver to press the reset button and clockwise rotated 90° and turn the word wheel to set your combination.
3. Then twist the reset button back, and press button(A) to check the correct digital.
4. Your own combination is now set.
Keep it in mind!

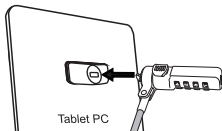
HOW TO LOCK



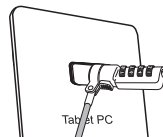
1. Loop the cable around a secure object.



2. Stick the gasket to the Tablet PC and wait 30 minutes.

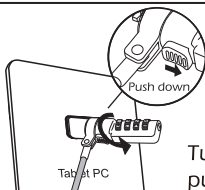


3. Insert the lock into the security slot and rotate clockwise the lock to 90°.



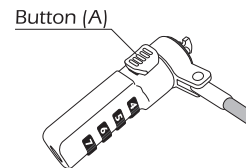
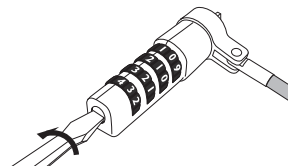
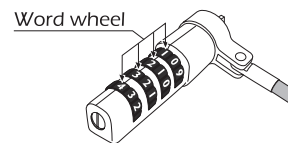
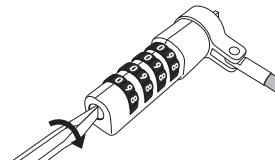
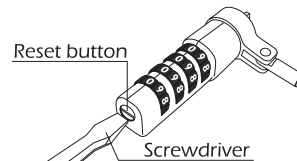
4. The lock is locked now.

HOW TO UNLOCK



Turn the wheels to your own number, push down the Button (A) and rotate the lock to 90° to pull out it.

SETTING LOCK COMBINATION



CTA DIGITAL
Brooklyn, NY 11205
support@ctadigital.com