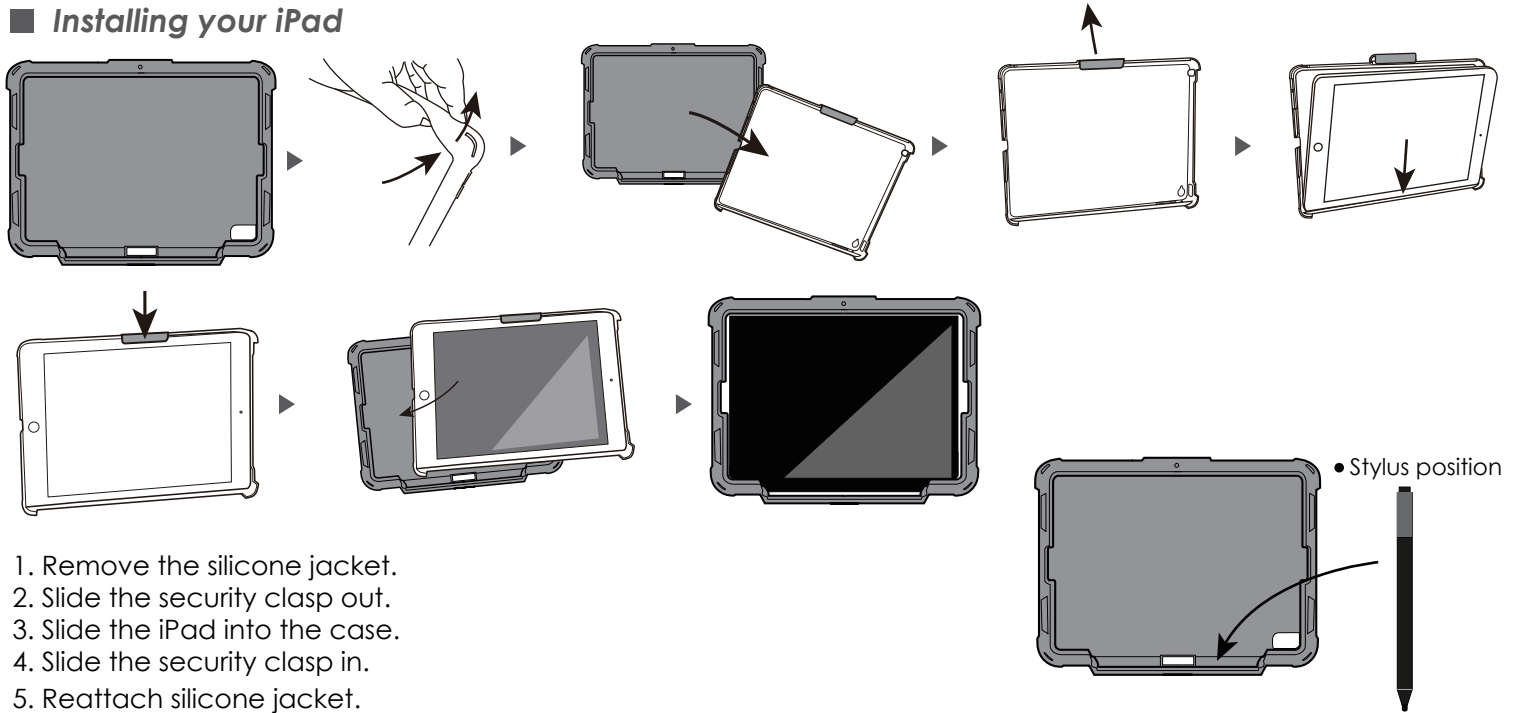


## Designed for 11-inch iPad Pro

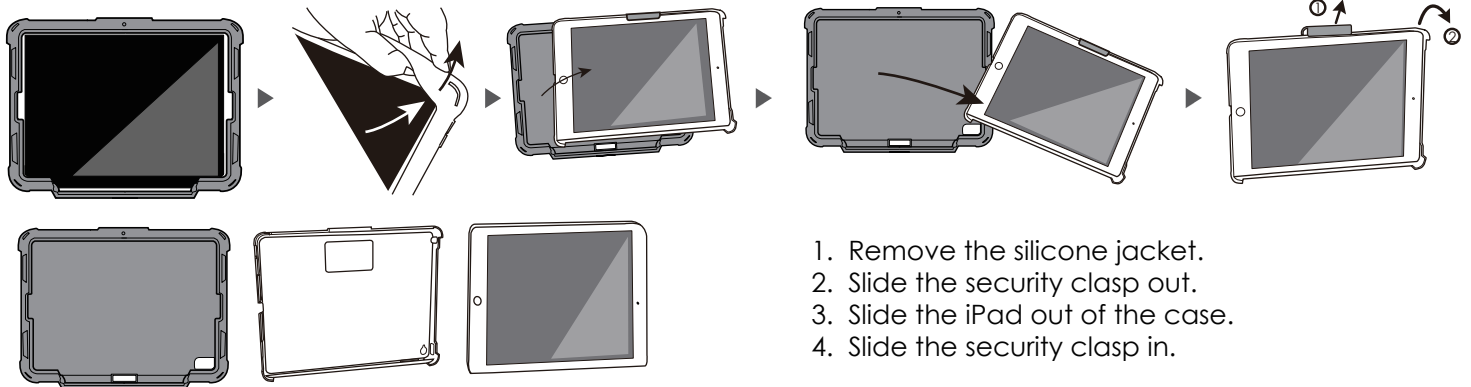
### ■ Installing your iPad



1. Remove the silicone jacket.
2. Slide the security clasp out.
3. Slide the iPad into the case.
4. Slide the security clasp in.
5. Reattach silicone jacket.

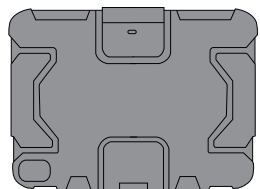
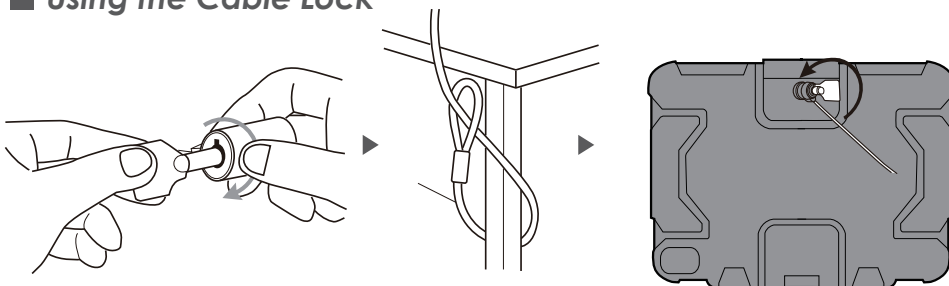
• Stylus position

### ■ Removing your iPad



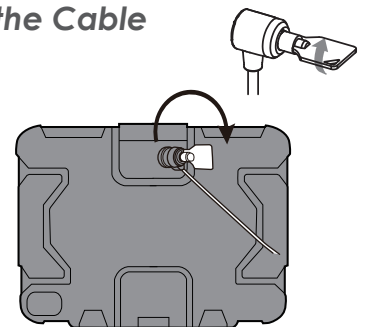
1. Remove the silicone jacket.
2. Slide the security clasp out.
3. Slide the iPad out of the case.
4. Slide the security clasp in.

### ■ Using the Cable Lock



1. Insert key and turn to unlock position.
2. Attach looped end to permanent fixture and pass cable head through loop.
3. Attach cable head to K-slot on tablet case.
4. Turn key to lock, then remove key.

### ■ Unlocking the Cable



1. Insert key and turn.
2. Remove cable lock.