



PAD-ICCB

# Inductive Charging Case (Black)

For iPad 10.2 (7th & 8th Gen)



### Features:

- Wireless charging function
- Durable impact shielding
- Rugged rubber construction
- Water resistant
- Includes VESA 75 x 75 and 100 x 100-millimeter mounting plates
- Embedded magnet allows for quick mounting to the inductive charging back plate
- Allows full access to charge port, speakers, camera, and home button
- Compatible with iPad 7th and 8th Generation 10.2-inch, iPad Pro 10.5-inch, iPad Air 3 & 4, and more

### Specifications:

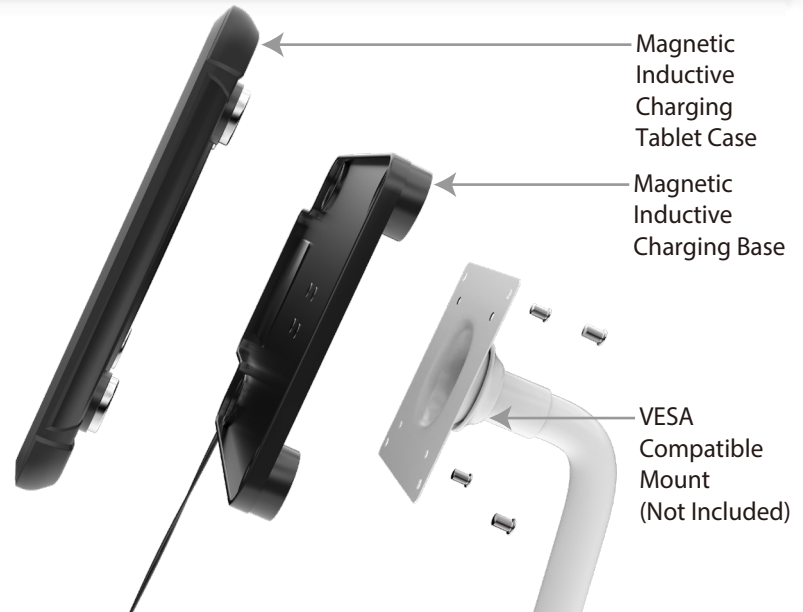
- Dimensions: 2.1 x 7.3 x 11.2-inches
- Weight: 1.1 lbs.

### Package includes:

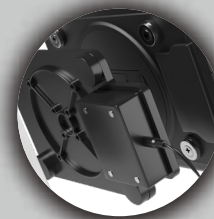
- (1) Rugged rubber case with magnetic housing plate
- (1) VESA plate
- (1) Inductive charging back plate

Attention retailers – and anyone who needs a rugged solution for a mobile and/or stationary tablet holder. Our inductive charging case exceeds the functionality of normal cases. First and foremost, it's wireless. The inductive charging back plate prevents the need to remove the iPad to plug in a charging cable. This innovative case can be used in a variety of ways. An included VESA mounting plate mounts to any 75 x 75 or 100 x 100-millimeter compatible mount. A built-in strap on the rear of the case lets users quickly switch for secure handheld use. Rear magnets allow for easy return to a mounting stand. This case is splash-proof, drop-tested, and ready to protect your store's iPad from messes, rough handling, or other incidents. Compatible with CTA's ADD-ICCBSTAND docking station.

Custom colors available. Call your CTA representative for details.



VESA Compatible



Fast-Charging Inductive Base Plate



Quick Magnetic Mounting

	Quantity	Width	Height	Depth	Weight	UPC Barcode
Packaging	-	-	-	-	-	656777019143
Master	-	-	-	-	-	10656777019140