



ADD-LTP

VESA Compatible Laptop Plate

INSTRUCTION MANUAL

Thank you for choosing CTA Digital's product. We hope that you will enjoy using it. Please follow the guidelines and instructions as laid out in this instruction manual.

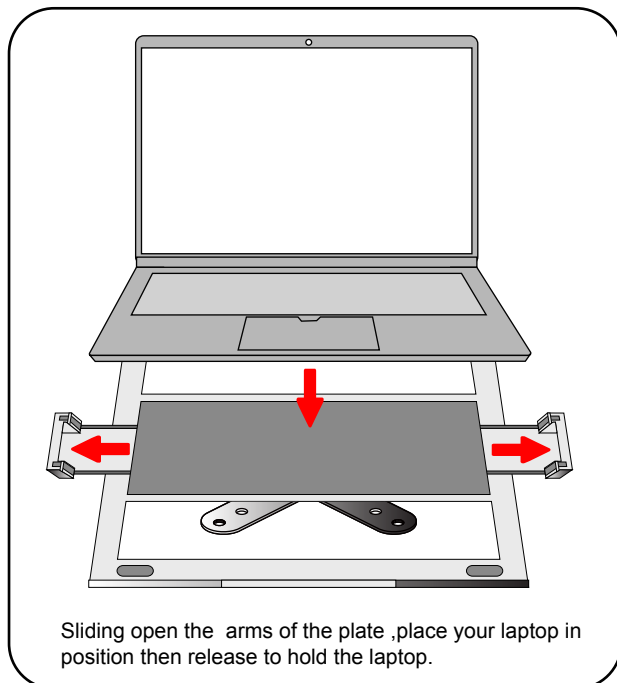
PACKAGE CONTENTS:

****Disclaimer:** VESA Compatible Laptop Plate comes fully assembled.

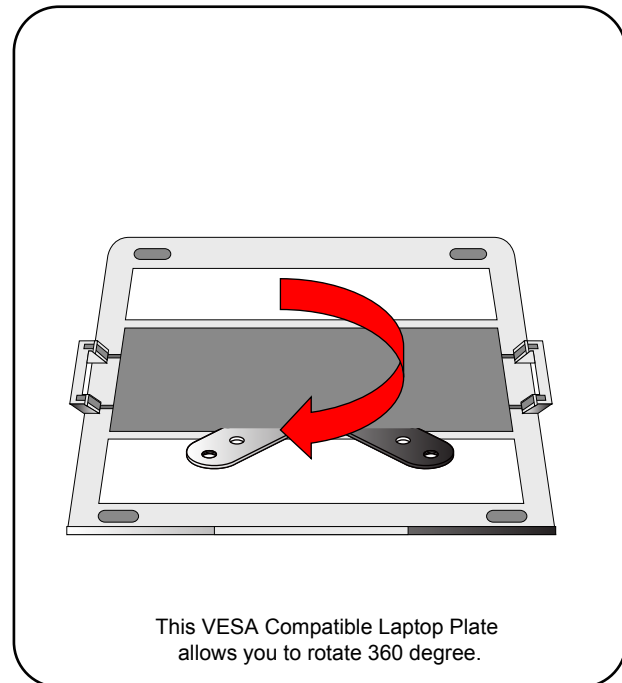


INSTRUCTIONS:

1. Installing Laptop into Plate



2. Adjusting the Laptop Plate



3. Connecting VESA to VESA

This VESA Compatible Laptop Plate allows you to connect with other VESA devices by screwing up the bolts with a screwdriver as shown.

