



# Tablet Carrying Case with Kickstand

PAD-TKSC10 / PAD-TKSC11

INSTRUCTION - MANUAL

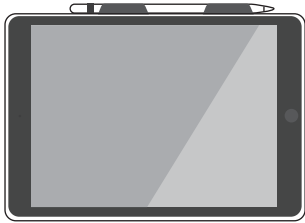
## CONTENTS



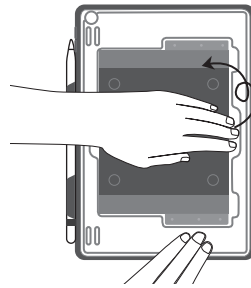
X1

## INSTALLATION

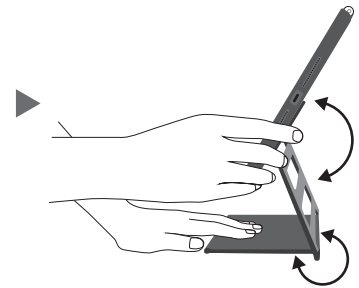
### 1. Tablet Kiosk Setup



1. Insert tablet into case first as shown above

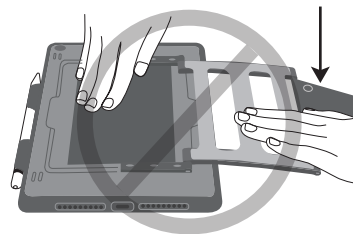
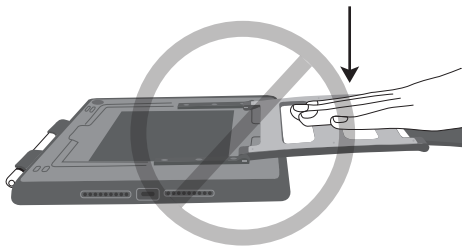


2. While holding the plastic portion of the case with one hand, pull out the folded kickstand carefully with other hand.

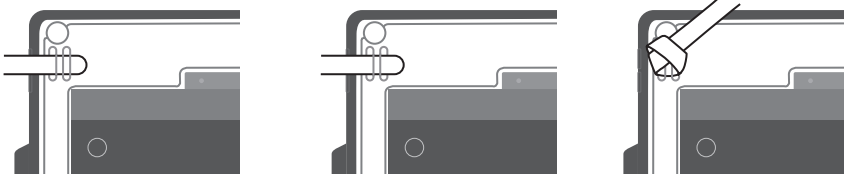


3. Adjust the angle and height to your preferred view.

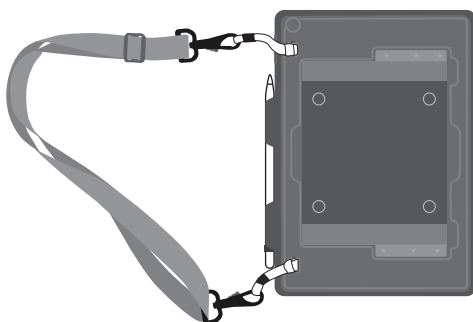
**\*\*Warning Disclaimer** - Do not press down on the kickstand when in the position showed below or there may be product integrity issues.



### 2. Strap Setup



1. Insert one end of the strap into the strap hole as shown above.



2. Make a knot and repeat for other strap end / hole.

